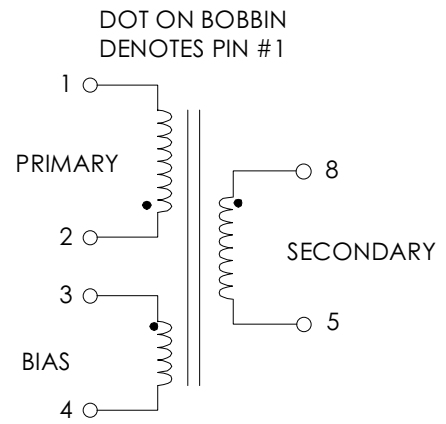


**TABLE 1: ELECTRICAL SPECIFICATIONS AT 25 °C**  
 SWITCHING TRANSFORMER DESIGNED FOR USE WITH POWER INTEGRATIONS  
 PWR-TOP222P REFER TO APPLICATION CIRCUIT OF FIGURE 3

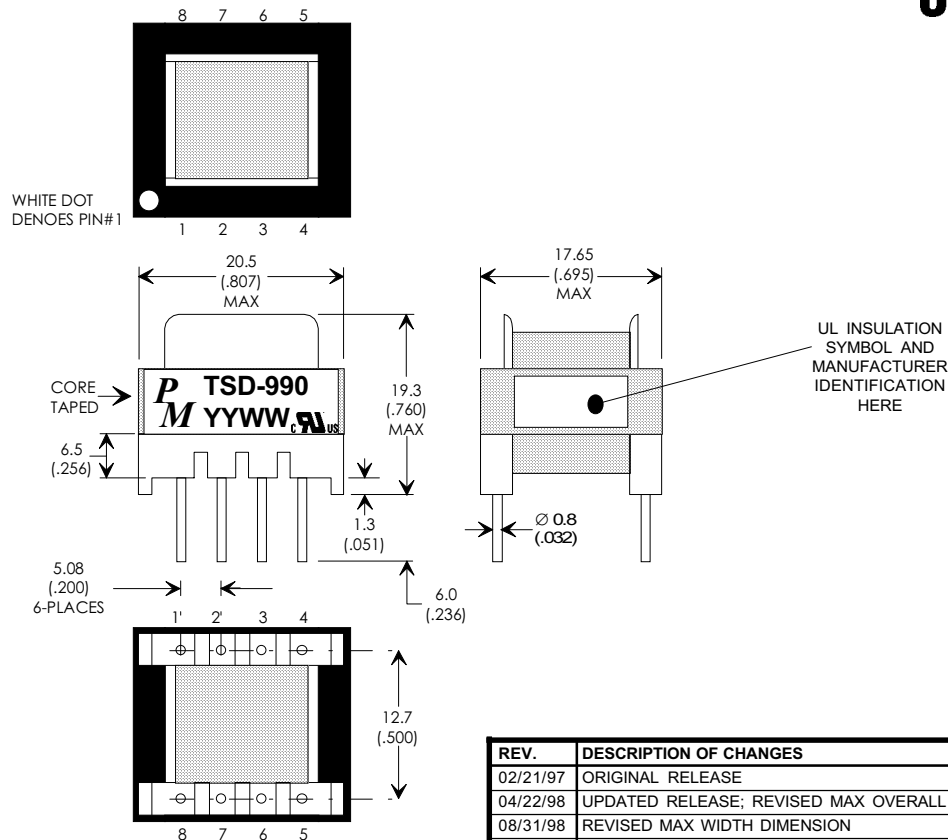
PARAMETER	SPEC LIMITS			UNITS
	MIN.	TYP.	MAX.	
PRIMARY INDUCTANCE (2-1) VOLTAGE = 0.250Vrms FREQUENCY = 100 KHZ	1350	1500	1650	μHY
TURNRATIO'S: SEC (8-5) : PRIMARY (2-1) BIAS (3-4) : PRIMARY (2-1)	---	1: 9.82 1: 18.00	---	± 3% ± 3%
PRI LEAKAGE IND. (SEC SHORTED) VOLTAGE = 0.250Vrms FREQUENCY = 100 KHZ	---	---	60.0	μHY
HIPOT: PRIMARY TO SECONDARY BIAS TO SECONDARY	3000 3000	---	---	Vrms Vrms
APP CIRCUIT PARAMETERS: AC LINE VOLTAGE 47/400 Hz SEC#1 OUTPUT VOLTAGE OUTPUT CURRENT CONTINUOUS LINE REGULATION (85 TO 265Vac) LOAD REGULATION (10-100%) RIPPLE	85 ---	---	265 ---	Vac Vdc mA ±% ±% ±mV
	0.020	---	670	
	---	4.00	---	
	---	5.00	---	
	---	---	50.0	

**FIGURE 1: SCHEMATIC DIAGRAM**

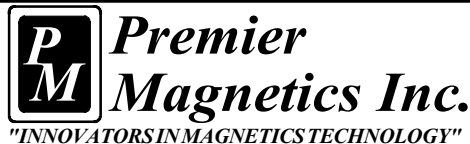


**NOTE1:**  
**REINFORCED INSULATION SYSTEM, UL1950, IEC950, CSA-950:**  
 A) ALL MATERIALS MEET "UL", "CSA" & "IEC" REQUIREMENTS  
 B) TRIPLE BASIC INSULATED SECONDARY.  
 C) VARNISH FINISHED ASSEMBLY.  
 D) UL1950 & CSA-950 CERTIFIED: FILE #E162344.  
 E) UL CLASS (B) 130 INSULATION SYSTEM PM130-R1,  
 PM130-H1, PM130-H1A (UL FILE #E177139) OR ANY UL  
 AUTHORIZED CLASS (B) INSULATION SYSTEM.

**FIGURE 2: PHYSICAL DIMENSIONS mm (INCHES)**



EE19 (E187), 8-PIN HORIZONTAL



UNLESS OTHERWISE SPECIFIED  
 DIMENSIONS ARE IN MM  
 DIMENSIONAL TOLERANCES ARE:  
 DECIMALS ANGLES  
 .X ± .25 ±0° 30'  
 .XX ± .15  
 DO NOT SCALE DRAWING

REV.	DESCRIPTION OF CHANGES	BY
02/21/97	ORIGINAL RELEASE	AS
04/22/98	UPDATED RELEASE; REVISED MAX OVERALL DIMENSION	AS
08/31/98	REVISED MAX WIDTH DIMENSION	AS
05/27/99	UPDATED TO UL CLASS (B) 130 INSULATION SYSTEM	MD

TRANSFORMER CONTROL DRAWING	
PREMIER P/N: TSD-990	REVISION: 05/27/99
ENGR: AL SANTOS	REF: PWR-TOP222P
SCALE: NONE	SHEET: 1 OF 6

